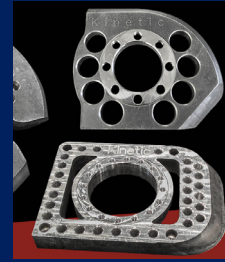


**FOR PRECISION CUTTING, MILLING, AND
DRILLING THAT MEET TIGHT TOLERANCES
AND EXCEED EXPECTATIONS FOR
QUALITY, CALL ARBOR/METALS INC.**



Finding Solutions Each & Every Time



Designed from the ground up to reduce plate-processing time and increase output, our newest Kinetic production cutting machines deliver high-precision cutting, as well as milling and drilling, to within very precise tolerances.

That means parts come off our machines faster and more accurately, requiring less grinding and fit up time during subsequent processes or final assembly. So whether you need plasma cutting, oxy-fuel cutting, or combination cutting milling and drilling, our state-of-the-art processing capabilities allow us to provide our customers with first-stage processing services that meet tight tolerances and high expectations for quality.

We also offer secondary processing such as beveling and surface preparations that help get your material ready for the next step in production. We inspect, package and deliver your material per your instructions.

Most importantly, we're available when you need us, 24 hours a day, seven days a week.



K2500

The K2500 is our heavy-duty production cutting machine, and is capable of plasma cutting and bevel cutting. This machine delivers renowned Kinetic accuracy and efficiency in a heavy-duty plasma cutting system that's perfect for a wide variety of plate processing applications.



K5000XMC & K5200XMC

Our top-of-the-line XMC machines are heavy-duty combination plasma cutting, oxy-fuel cutting, and milling machines that deliver maximum speed and accuracy in plate processing. With multiple functions in a single machine, there's no need for complex fixtures, multiple setups, or moving work pieces from station to station. This streamlined processing time maximizes productivity and output so you get what you need, when you need it.

OUR THREE PROCESSING AND DISTRIBUTION FACILITIES ARE SITUATED IN KEY LOCATIONS IN THE SOUTHERN UNITED STATES TO ENSURE THE HIGHEST LEVELS OF SERVICE AND CONVENIENCE FOR OUR CUSTOMERS. EACH LOCATION IS EQUIPPED WITH STATE-OF-THE-ART KINETIC PRODUCTION CUTTING MACHINES.

MOBILE, AL

K2500

TULSA, OK

K5000XMC

HOUSTON, TX

K5200XMC

| CUTTING CAPABILITIES | | | |
|----------------------|-------------------|-------------------|-------------------|
| Plasma | up to 3 in. thick | up to 3 in. thick | up to 3 in. thick |
| Oxy-Fuel | | | up to 8 in. thick |
| Plasma Beveling | • | • | • |
| Oxy Fuel Beveling | | | • |

| MACHINING CAPABILITIES | | | |
|------------------------|---|------------------|------------------|
| Drilling | | up to 4 in. hole | up to 4 in. hole |
| Tapping | | up to 2 in. hole | up to 2 in. hole |
| Counter Boring | | • | • |
| Chamfering | | • | • |
| Part Marking | • | • | • |
| Milling | | • | • |
| Hole Interpolation | | • | • |
| Thread Milling | | • | • |

| TABLE SIZE | | | |
|------------|--------------|--------------|--------------|
| Width | up to 10 ft. | up to 10 ft. | up to 10 ft. |
| Length | up to 20 ft. | up to 40 ft. | up to 40 ft. |

HOUSTON

8411 Irvington Blvd, STE A
Houston, TX 77022

p: 800.231.8890

MOBILE

8639 Bellingrath Road
Theodore, AL 36582

p: 800.817.8335

TULSA

1010 West 37th Place
Tulsa, OK 74107

p: 800.279.4515

